



Personalised Digital Learning Programme (PDLP)

Briefing for Parents

22 December 2022

A PRESENTATION BY
MINISTRY OF EDUCATION, SINGAPORE



Intended Outcomes of the PDLP

The use of the PLD for teaching and learning aims to:



**Support the Development
of Digital Literacy**



**Support Self-Directed and
Collaborative Learning**



**Enhance Teaching and
Learning**

Supporting Students in the Safe and Effective Use of the Devices

Cyber Wellness Concerns Identified by International Studies



Harmful Online Content

50% of Singaporean teenagers are exposed to cyber threats and 28% of them are exposed to violent content.

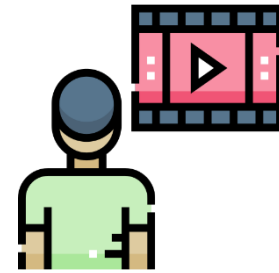
(COSI, 2020)



Distraction from Learning

72% of teens feel compelled to immediately respond to texts, social posts and notifications.

(Kimball & Cohen, 2019)



Excessive Screen Time

Teens who don't sleep enough report higher levels of depressive symptoms than well-rested peers (31% vs. 12%).

(Kimball & Cohen, 2019)

Supporting Students in the Safe and Effective Use of the Devices

The school has measures in place to enable a safer digital environment for learning with the use of PLDs, e.g.

- ✓ Classroom management and routines
- ✓ Educating students on Cyber Wellness
- ✓ Partnering parents/guardians to ensure that students are well-supported in their use of technology for learning
- ✓ Device Management Application (DMA)

C
H
A
M
P
S



Charge PLD Fully

- ✓ Charge your PLD fully before coming to school



Highlight Issues

- ✓ Seek help from ICT Champs
- ✓ Inform Teachers if necessary
- ✓ Approach ICT Office for unresolved issues



Alert in Safeguarding PLD & Belongings

- ✓ Do not leave your PLD unattended
- ✓ Carry your PLD in a suitable laptop carrier
- ✓ Protect your PLD from potential hazards



Manage WiFi, Calendar & Online Lessons

- ✓ Check that WiFi is connected to pdlp@SSOE in school
- ✓ Actively learn and be self-directed
- ✓ Keep track of tasks in Google Calendar
- ✓ Complete assignments and activities promptly



Protect Passwords

- ✓ Remember your passwords and keep them safe
- ✓ Attempt self-reset of passwords first
- ✓ Inform your Teacher / ICT Office after 2 failed logins



Creedown Fully & Pay Attention

- ✓ Lower your screens and listen carefully when your Teacher is giving instructions or going through lessons



- When I am not in class with my PLD, have I secured it in my PDLP locker?
- Is my PLD ready for my next lesson?



Cyber Wellness Education



Educating students on Cyber Wellness

MOE has made significant changes to the Character and Citizenship Education. Cyber Wellness lessons will feature significantly in the CCE2021 lessons.

The school also has strategies to enable school-wide implementation of CCE.

These include:

- ✓ Foregrounding Cyber Wellness lessons before issuing PLDs
- ✓ Empowering of Cyber Wellness Champs to promote the safe and responsible use of the internet to their peers
- ✓ Reinforcing of Cyber Wellness messages through educational talks and Cyber Wellness Fest for Sec 1s
- ✓ Student advocacy through poster design for the Sec 2 cohort
- ✓ Sharing of Cyber Wellness Parent tips on school website



Parents'/Guardians' Role

- We would like to partner parents/guardians to ensure that students are well supported in their use of technology for learning.
- As parents/guardians, you can help in the following ways:
 - ✓ **Model good digital habits** for your child/ward e.g. parents/guardians not using devices during family meals.
 - ✓ **Know your child/ward** well, and **have conversations** with your child/ward about safe and responsible use of technology.
 - ✓ **Set ground rules** for internet/device usage.
 - ✓ **Guide your child/ward** to use productivity tools using his/her PLD, to organise information and simplify tasks for efficiency.

Role of the DMA in Providing a Safer Digital Environment for Learning

Device Management Application Installation

- Your child's/ward's PLD will be installed with a **Device Management Application (DMA)** to provide a safer digital environment for learning.
- Installation of the DMA will be performed after the collection of the device. Students will be guided on the installation.
- This applies to both devices purchased through the school and pre-existing student-owned devices.
- The DMA will be **funded by MOE** and will be **uninstalled** from the device **when your child/ward graduates/leaves the school**.

In-School DMA Settings (Default)

Schools will determine DMA settings for **in-school use**. As a default, these settings will continue to be in place after school as well:

- MOE and the school will set the level of web content filtering, including filtering out objectionable content or content that may not be conducive to teaching and learning (*e.g. social media, pornography, gambling, or websites containing extremist content*)
- Students will be able to use the device from **6 a.m. to 11 p.m.** daily
- The school will determine the apps and programs to be installed to support teaching and learning

Providing Parents/Guardians with Greater Choice for After-School PLD Use

The school will provide parents/guardians with more information on exercising the options.

Default	Option A	Option B
In-school DMA settings will continue after school hours	Parents/Guardians can modify the DMA settings after school hours	Parents/Guardians can choose to disable DMA after school hours
For parents/guardians who want their child's/ward's use of the devices to be restricted only to teaching and learning, and prefer to leave it to the school to decide on DMA settings after school hours.	For parents/guardians who want more leeway over the use of the device, and prefer to take charge of the level of restrictions for their child's/ward's use of the device after school hours.	For parents/guardians who do not want their child's/ward's use of the device to be regulated by DMA after school.

- Having default school settings continue after school hours is the best option for parents/guardians who prefer not to, or do not feel ready to manage their child's/ward's device use on their own.
- Parents/guardians can request to change their choice of DMA settings at any time.

Providing Parents/Guardians with Greater Choice for After-School PLD Use

	Default	Option A	Option B
Protecting students from objectionable content	MOE/school sets level of web content filtering	Parents/Guardians can apply additional content filtering	No content filtering
Reduce distractions from learning through control of applications	Parents/Guardians and students <u>unable</u> to install additional applications	Parents/Guardians and/or students can install applications after school hours, but these applications are disabled during school hours	
Limit screen time	School sets hours during which students are able to use the device online	Parents/Guardians can modify the amount of screen time*	No control over screen time

*Screen time limits set by the school will override parents'/guardians' settings during school hours.

Providing Parents/Guardians with Greater Choice for After-School PLD Use

	Default	Option A	Option B
Parent/guardian account	Provided to allow monitoring of PLD activities after school hours		Not provided
Monitor students' cyber activities	Parents/Guardians can track their child's/ward's browser history after school hours		<p>Parents/Guardians will <u>not</u> be able to monitor or control their child's/ward's use of the device through the DMA after school hours</p> <p>No data* will be collected during use of PLD after school hours</p>

Data Collected by the DMA

The DMA does **NOT** collect any of the following data:

- Login IDs and passwords entered into websites or into any applications
- Actions performed (e.g. posts, online comments, items added to a shopping cart, etc.) when visiting websites and using apps
- Documents and photos stored in the PLDs
- PLD location
- Webcam videos and microphone recordings

Deciding on the Choice of After-School DMA Option

Parents/guardians may wish to consider the following questions before deciding on the choice of after-school DMA option which is best for your child's/ward's learning.

1. Child's/ward's current device usage habits

- How much time does my child/ward spend on their device?
- How well is my child/ward able to regulate their device usage on their own?
- Does my child/ward get easily distracted while doing online learning?

2. Parents'/Guardians' involvement

- How confident and familiar am I with managing my child's/ward's cyber wellness?
- Are there existing routines and open conversations on the use of the Internet at home?
- Am I aware of how to prevent different types of cyber threats that my child/ward might face?



Have a conversation with your child/ward to talk about which setting is best for your child's/ward's learning.

Device and Funding Information

Pasir Ris Secondary School's PLD

REFRESHED MODEL



The school will be using the **Acer R753TN** for teaching and learning.

Total cost with GST: **\$548.64**

The school chose the device because of:

- ✓ T&L Affordances
- ✓ Economical
- ✓ Lightweight (1.25 kg)
- ✓ Military-grade Durability
- ✓ Convertible Laptop
- ✓ Touch Screen
- ✓ EMR Pen (built-in stylus)

**Intel N4500 processor, 8GB RAM,
64GB Storage, 11.6" Screen Size**

PLD Bundle

Device Bundle includes
<ul style="list-style-type: none"><input type="checkbox"/> Acer R752TN Chromebook<input type="checkbox"/> Power Adaptor, Mouse, Stylus, Carrier Bag<input type="checkbox"/> Insurance and Warranty

Your child's/ward's PLD will come with the **Enhanced Device Bundle** which includes a **3-year warranty, and 3-year insurance**

Insurance Coverage	Claimable
<ul style="list-style-type: none">• Fire• Lightning• Power Surges• Accidental e.g water spillage, drop etc• Theft due to forcible entry• Robbery <p><i>* Accidental loss will not be covered by insurance.</i></p>	2 repairs or 1 replacement (3-year insurance)

Funding Support for Singapore Citizen (SC) Students

- **The cost of the device bundle can be paid using your child's/ward's Edusave account**, after setting aside provision for payment of second-tier miscellaneous fees.
- To ensure the affordability of devices, MOE has provided Edusave top-ups of \$200 in 2020 and \$200 in May 2021 (as part of the Household Support Package announced in Budget 2021), to all eligible SC students in primary and secondary schools.
- This is on top of the annual \$290 credited into the Edusave account for Secondary School students and \$230 for Primary School students.

Funding Support for Singapore Citizen (SC) Students

- For SC students who are on MOE Financial Assistance Scheme or whose family's monthly income meets the following criteria:

Gross Household Income (GHI) \leq \$3,000, or

Per Capita Income (PCI) \leq \$750

the school will subsidise 50% of device bundle cost or \$350, whichever is lower.

- The remaining amount will be payable from the students' Edusave account. If there is insufficient balance in the students' Edusave account for the remaining amount, school will provide additional subsidy so that the cash out-of-pocket (OOP) is \$0.

Funding Scenario: Student A (SC)



**Acer R753TN
Chromebook
\$548.64**

Student A (SC on MOE FAS) GHI \leq \$3,000 or PCI \leq \$750	
Device Bundle Cost	\$548.64
Student Subsidy	\$274.32
Available Edusave Balance <i>(After setting aside for 2nd-tier misc fees)</i>	\$200.00 before deduction \$200.00 will be deducted
Additional Subsidy	\$74.32
Cash Out-of-pocket	\$0.00

For more details on financial assistance, please approach the school.
Each student would receive a personalised bill subsequently.

Funding Support for Singapore Citizen (SC) Students

- For SC students whose family's monthly income is:

$\$3,000 < \text{Gross Household Income (GHI)} \leq \$4,400$, or

$\$750 < \text{Per Capita Income (PCI)} \leq \$1,100$

the school will subsidise 30% of device bundle cost or \$200, whichever is lower.

- The remaining amount will be payable from the students' Edusave account. If there is insufficient balance in the students' Edusave account for the remaining amount, school will provide additional subsidy so that the cash out-of-pocket (OOP) is not more than \$50.

Funding Scenario: Student B (SC)



**Acer R753TN
Chromebook
\$548.64**

Student B (Non MOE-FAS SC from lower income family) \$3,000 < GHI ≤ \$4,400 or \$750 < PCI ≤ \$1,100	
Device Bundle Cost	\$548.64
Student Subsidy	\$164.59
Available Edusave Balance <i>(After setting aside for 2nd-tier misc fees)</i>	\$200.00 before deduction \$200.00 will be deducted
Additional Subsidy	\$134.05
Cash Out-of-pocket	\$50.00

For more details on financial assistance, please approach the school.
Each student would receive a personalised bill subsequently.

Funding Support for Singapore Citizen (SC) Students

- SC students whose family's monthly Gross Household Income (GHI) > \$4,400 or monthly Per Capita Income (PCI) > \$1,100, no subsidy will be provided. Parents/Guardians can use their child's/ward's Edusave or cash to defray the device bundle cost.

Funding Scenario: Student C (SC)



**Acer R753TN
Chromebook
\$548.64**

Student C (Not Eligible for Subsidy) GHI > \$4,400 or PCI > \$1,100	
Device Bundle Cost	\$548.64
Available Edusave Balance <i>(After setting aside for 2nd-tier misc fees)</i>	\$200.00 before deduction \$200.00 will be deducted
Cash Out-of-pocket	\$348.64

Funding Support for Non-Singapore Citizen Students

- Permanent residents (PR) and international students (IS) who need support could apply for subsidies, particularly those whose Gross Household Income (GHI) is below \$4,400 or Per Capita Income (PCI)[#] is below \$1,100.
- For more details, please contact the school General Office.

[#]PCI is Gross Household Income divided by the number of household members.

What's Next?

PLD Procurement

Time Frame	Activity
27 Dec 2022 – 6 Jan 2023	<p>Submit Letter to Parents for Procurement which includes the following annexes:</p> <ul style="list-style-type: none"> • Intent to purchase • Use of Edusave (<i>For SC Students only</i>) <p>To proceed with the purchase of the PLD, please fill in the online form at this link: https://go.gov.sg/pdlpadmin Please contact the school for a hardcopy version if you are unable to submit the form online.</p>
Upon receiving School Bill	Parent/Guardian to make payment via Giro/PayNow/Cheque/etc. (<i>where necessary</i>)
Feb 2023 (TBC)	<ul style="list-style-type: none"> • Collection of devices by students • Parents to indicate choice of after-school DMA settings

Collection of Devices

Your child/ward will be collecting his/her device in school **around February 2023**.

If you would like to verify the condition of the device during collection with your child/ward:

- You may arrange to collect the device **at the contractor's service / collection centre*** or appoint an adult proxy to do so.
- Your child/ward would need to bring the device to school and arrange for the school's IT department to install the DMA.

Please approach the school for further advice or clarification if you would like to make this arrangement.

* Parents/Guardians (or adult proxy) will **not** be able to collect the PLD from the school.

Important Contacts / Helplines

To access / find out more about...	Contact / Helpline
NDLP @ PRSS	https://go.gov.sg/prssndlp
Edusave Balance	6260 0777
Financial Assistance (via School General Office)	6501 0800
School ICT Helpdesk <ul style="list-style-type: none">• Troubleshooting of device issues• Solve connectivity issues• Collection of devices to be sent for repairs	6501 0891

Blended Learning Day

- ☐ **Fortnightly BL Days** on even week Wednesdays in 2023. *(Date of 1st BL Day TBC)*
- ☐ Sec 1 students who require a device for BL Day may loan from ICT Office in the interim before delivery of the PLD

During Week of BL Day

- ☐ Students can loan the device from Mondays of the BL Day week
- ☐ Students must return the loaned device by Thursdays of the same week
- ☐ One-time parental consent required

Opening of Comp Lab to support in-school learning during BL Days

*Students may inform HTs if they would like to return to school
Some students may be invited back for BL Days*

Frequently Asked Questions

“Can my child use an existing portable computing device (e.g. Windows laptop, Apple iPad, etc.) at home as his/her PLD?”

The school-prescribed PLD in PRSS is the **Chromebook**.

Laptops or tablets not operating on the Chrome O.S. will not be allowed.

Students and parents without an existing Chromebook are strongly encouraged to purchase the PLD through the school-facilitated PLD procurement.

***“Is the installation of the DMA compulsory?
Must it be installed even if we are using our own Chromebook?”***

All PLDs (i.e. Chromebooks) which are used in school for learning must be installed with the DMA, which includes content filtering features to restrict access and exposure to inappropriate sites.

Parents may have the option to remove the DMA after-school hours (i.e. after-school DMA Option B) although this practice is highly discouraged.

More information about the DMA and the after-school DMA settings will be shared during the rollout of the PLD.

“Is there free Wi-Fi for students to connect their other personal gadgets and handphones in school?”

Yes, students may use the school Wi-Fi for their personal devices.

The PLD (Chromebook) will be connected automatically while other devices will require a user login and password.

The details for the login will be shared with students during the Sec 1 Orientation.

Additional Resources for Parents

To support you in keeping your child/ward safe online, you may refer to these additional resources:

- Parent Handbooks (I) and (II) on Learning with a Personal Learning Device (uploaded on school website: <https://go.gov.sg/prssndlp>)
- Parent Kit on Cyber Wellness for Your Child (<https://go.gov.sg/moe-cyber-wellness>)
- Schoolbag article 'Keeping our teens safe online' (<https://www.schoolbag.edu.sg/story/keeping-our-teens-safe-online>)
- MOE Cyber Wellness Programme (<https://www.moe.gov.sg/programmes/cyber-wellness/>)
- Media Literacy Council (<https://go.gov.sg/better-internet-sg>)
- National Library's Learning & Information Literacy Resources (<https://sure.nlb.gov.sg/>)
- TOUCH Community Services (<https://help123.sg>)

THANK YOU

